

GOVERNMENTAL **SOLUTIONS**

2021 BUYERS GUIDE

A CATERPILLAR PUBLICATION SERVING GOVERNMENTAL AGENCIES



2021 BUYERS **GUIDE**

FABICK





NEW, CAT® M316 NEXT GEN WHEELED EXCAVATOR

Improve Performance, Lower Owning and Maintenance Costs

The new Cat® M316 Next Generation Wheeled Excavator's advanced hydraulics combine the optimum balance of power and efficiency to deliver the control needed for precise working requirements.

Today's M316 completes your jobs faster with up to 14% more swing torque, while auxiliary hydraulic options deliver power and versatility to efficiently use a wide range of Cat attachments.

Quickly tackling a range of projects from utility work to general excavating and trenching, the M316 efficiently completes agency tasks, whether in the dirt or on asphalt surfaces. Its high travel speeds reaching 21.7 mph enable quick travel between jobsites, so it spends more time working.

The fuel-efficient, 148 hp Cat C4.4 Tier 4 engine delivers reliable power for the M316 to complete tasks in a wide range of applications and locations with its standard high-ambient temperature capability of 125° F and low cold-start capability of 0° F.

Simple, comfortable operation

Machine controls are easy to use and navigate with the new large, 10-in. touchscreen monitor or with the jog-dial control. Using a unique I.D., operators can program power mode and joystick configuration to their preferences, and the excavator remembers each operator's settings on start-up.

The available deluxe and premium cab designs for the new M316 are more spacious and offer improved entry/exit through

the new tip-up left control console and tilt steering column. The deluxe cab features air-adjustable heated seat, while the premium seat is heated, cooled and adjusts automatically. Standard rearview and sideview cameras further improve visibility to the operating area.

Lower maintenance costs

Next Gen design upgrades mean up to 10% savings on maintenance over the M316F. All fuel filters have a synchronized, 1,000-hour change interval, doubling filter life. New hydraulic oil filter delivers improved filtration and a 50 percent longer change interval at 3,000 operating hours for reduced maintenance.

All daily maintenance checkpoints are accessible from ground level, improving convenience and safety for service technicians. Further simplifying maintenance, Cat S-O-SSM Fluid Analysis ports are also accessed from ground level for sample fluid extraction.

Technology boosts efficiency

Standard Product LinkTM technology on the M316 provides critical machine operating data such as location, hours, fuel usage, idle time and diagnostics codes to boost agency fleet management efficiency.

To learn more about the versatile, new M316 Wheeled Excavator, contact the product experts at our dealership today or click on cat.com. 

GOVERNMENTAL SOLUTIONS

2021 BUYERS' GUIDE

09

SKID STEER LOADERS

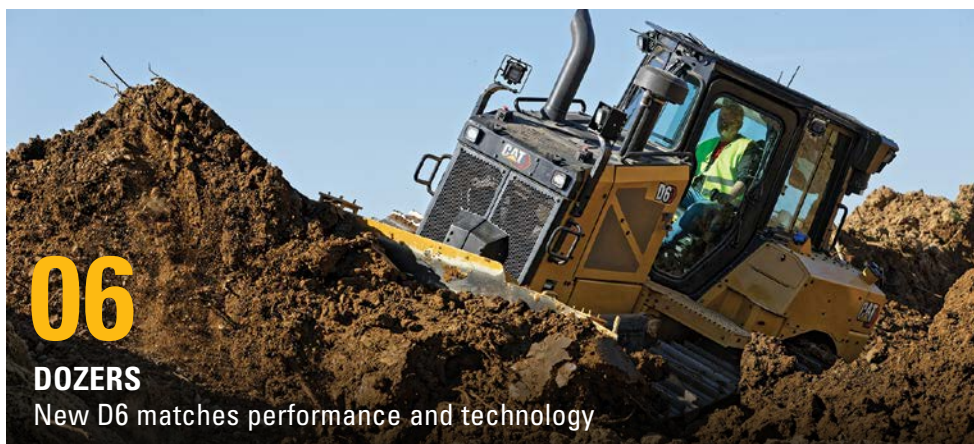
New D3 Series are versatile machines



06

DOZERS

New D6 matches performance and technology



08

WHEEL LOADERS

Deliver proven reliability and performance



15

ATTACHMENTS

Increase machine versatility



CONTENTS

- 04 MOTOR GRADERS
- 05 TELEHANDLERS
- 06 DOZERS
- 07 BACKHOE LOADERS
- 08 WHEEL LOADERS
- 09 SKID STEER LOADERS
- 10 COMPACT TRACK LOADERS
- 11 HYDRAULIC EXCAVATORS
- 12 WHEELED EXCAVATORS
- 13 TRANSFER STATION & MRF MACHINES
- 14 LANDFILL MACHINES
- 15 TRACK LOADERS/ ATTACHMENTS

Governmental Solutions is published by High Velocity Communications Inc. on behalf of Caterpillar and your Cat Dealer. Publisher, Tim O'Brien • Editor, John Rondy • Creative Director, Jay Blazek • Director of Client Services, Kelly Pemper. Every attempt has been made to ensure specifications are accurate. Because specifications are subject to change without notice, check with us, your Cat Dealer, for the latest equipment information. Some photography provided courtesy of Caterpillar Inc. High Velocity Communications Inc., 1720 Dolphin Drive, Suite D, Waukesha, WI 53186-1489. Phone (262) 544-6600. Please submit address corrections and changes via e-mail to: Kelly@HighVelocityCommunications.com. © 2021 High Velocity Communications Inc. Printed in the U.S.A. **Volume 21 Number 1 Buyers Guide.** © 2021 Caterpillar. All Rights Reserved. CAT, CATERPILLAR, LET'S DO THE WORK, their respective logos, "Caterpillar Yellow", the "Power Edge" and Cat "Modern Hex" trade dress as well as corporate and product identity used herein, are trademarks of Caterpillar and may not be used without permission. VisionLink® is a trademark of Trimble Navigation Limited, registered in the United States and in other countries.

[CAT.COM/GOVERNMENTAL](https://cat.com/governmental)

Includes complete specifications for all machines. Check this out and more at **[Cat.com/governmental](https://cat.com/governmental)**.



MOTOR GRADERS

120

140

140 GC

150

160

14

- Net Power: 139 hp – 293 hp
- Operating Weights: 35,067 lb – 57,250 lb
- Extended Protection Plan coverage is now available on Cat® Motor Graders already in your fleet. A two-year/2,000-hour Premier extension is offered for machines seven years old and newer.
- Stable Blade is an industry-exclusive, patented technology that detects machine bounce, and automatically reduces machine speed as needed before the operator even notices the need.¹ Once stabilized, the machine returns to its original speed without operator intervention.
- Serviceability features unique to Cat models help keep uptime high and performance strong. Cat Top Adjust Drawbar wear inserts provide easy access from the top of the drawbar.² Low-cost, replaceable bronze wear inserts in the lift and centershift cylinder ends help maintain factory tightness.
- Technology packages are available at a wide variety of levels to help meet your agency's needs. Whether operators need a basic indication of slope or accessibility to equip your machine with 2D or 3D machine control and guidance systems, Cat Motor Graders can address your application needs.
- Auto Articulation enables your agency's Cat Motor Graders to articulate automatically when steered, improving performance and maneuverability in tight spaces.³

¹ Stable Blade is not available on the 140 GC

² Top Adjust is not available on the 140 GC

³ Auto articulation is only available on joystick models

Note: Additional features available for most models, consult your dealer for more information.





TELEHANDLERS

Superior design and advanced features combine to give Cat® Telehandlers the best all-around visibility, lift and reach capabilities. Top performance and rugged construction deliver reliability and durability with low operating costs. Designed to meet the varying needs of construction applications, the comprehensive range of standard features and optional equipment extends the scope for wider application use.

- Gross Power: 74 hp – 134 hp
- Load Capacities: 5,500 lb – 12,000 lb
- Max Lift Height: 18.4 ft – 54.6 ft
- Excellent visibility with optional peripheral sensors and rearview camera provide operator with confidence for safe, efficient operation
- Single-lever joystick activates all boom functions for easy operation
- Quiet, spacious operating environment with adjustable suspension seat and intuitive controls deliver operator comfort all-shift long
- A variety of attachments is available to equip your telehandler for any task. Fork carriages, buckets, pipe grapples and truss booms are just some of the options available, enabling you to tailor your machine to the jobs at hand in your city, county or township.
- Ground-level access to all daily service points and a side-mounted engine make servicing simple

TH255C TL1055
TL642 TL1255
TL943





DOZERS

D1	D6
D2	D6 XE
D3	D7
D4	D8T
D5	D9

Small | D1, D2, D3

- Net Power: 80 hp – 104 hp
- Operating Weights: 17,855 lb – 20,639 lb
- Stable Blade complements operator blade control input, reducing fatigue
- Eco Mode delivers extra fuel savings of up to 20 percent
- Traction Control reduces undercarriage wear, even under maximum load
- Power Pitch option enables blade pitch from the operator's seat to boost productivity
- Optional heated and ventilated air-suspension seat and optional heated control handles help increase operator comfort in all climates
- Optional Slope Assist helps achieve desired blade mainfall
- Cat® GRADE with 3D is an optional, integrated 3D grade control system, enabling operators to improve grading efficiency, accuracy and productivity

Medium | D4, D5, D6, D6 XE

- Net Power: 130 hp – 215 hp
- Operating Weights: 22,544 lb – 51,333 lb
- Revolutionary D6 XE is world's first High Drive, Electric Drive Dozer, delivering constant power to the ground, greater agility and faster cycle times
- D6 XE is up to 35 percent more fuel efficient and up to 50 percent more productive
- Updated GRADE with 3D and Slope Assist helps achieve the best quality results
- Hydraulic and electrical lines running to the blade are guarded for better protection
- Choose from standard or Low Ground Pressure (LGP) undercarriage

Large | D7, D8T, D9

- Net Power: 265 hp – 452 hp
- Operating Weight: 86,900 lb – 110,225 lb
- GRADE with 3D, optional on all models, is engineered specifically for Cat Dozers and fully integrated at the factory to optimize blade loads





BACKHOE LOADERS

Cat® Backhoe Loaders help you complete much more work in less time on your jobsites, with front loader arms that provide improved reach and excavator-style boom that delivers superior digging power. These machines are also extremely versatile with a variety of attachments, so you can go from moving material and digging trenches to breaking up soil or hard surfaces quickly. Because of their relatively small frame size and versatility, Cat Backhoe Loaders are reliable performers and lower your machine operating costs.

- Net Power: 70 hp – 131 hp
- Digging Depths: 14 ft – 17 ft
- Operating Weights: 15,246 lb – 24,039 lb
- New 420 XE delivers exceptional performance, increased fuel economy, superior hydraulic system, maximum versatility and updated operator station
- Powerful, load-sensing hydraulic systems provide excellent response for improved hoe and loader productivity and greater bucket breakout force
- Spacious operator station with machine controls at operator's fingertips and multiple adjustments keep the operator comfortable and productive
- Selectable Power Management Modes not only save fuel, but maintain machine performance
- Industry-leading versatility with an integrated toolcarrier provides a hydraulic coupler and increased loader performance over the single-tilt loader, as well as parallel lift
- Air-suspension seat and ergonomic controls provide a comfortable working environment
- Travel speeds up to 25 mph enable faster roading between jobsites

415

416

420

420 XE

430

440

450





903D	950 GC
906M	962M
907M	966M
908M	966M XE
910	972M
914	972M XE
920	980M
926M	982M
930M	986K
938M	988K
950M	988K XE

Compact | 903D, 906M, 907M, 908M, 910, 914

- Net Power: 42 hp – 110 hp
- Operating Weights: 9,414 lb – 19,103 lb
- Cat® C3.6 engine powers new 910 and 914 for greater hp, improved fuel efficiency
- Strong breakout force and dependable performance are built in for fast cycle times
- Superior reach and excellent visibility enable easy, efficient material placement
- Spacious cabs with joystick controls keep operators comfortable all-shift long
- Optional Ride-Control system provides an even more comfortable ride and greater material retention over rough terrain
- Skid steer loader-style coupler on the 903D, 906M, 907M and 908M enables use of Cat Skid Steer Loader attachments for increased versatility
- Tackle more jobs with one machine using the extensive line of Cat attachments

Small/Medium | 920, 926M, 930M, 938M, 950M, 950 GC, 962M, 966M, 966M XE

- Net Power: 117 hp – 298 hp
- Operating Weights: 21,082 lb – 51,176 lb
- Cat C3.6 engine powers new 920 for greater horsepower, improved fuel efficiency
- A smooth, hydrostatic transmission provides adjustable power to the ground
- Large, spacious cabs feature excellent visibility, extremely low sound levels, automatic temperature control and ergonomic seat-mounted joystick controls
- Predictable hydraulic systems sense demand and adjust flow and pressure to match
- Optimized, parallel-lift, Z-bar loader linkage combines powerful digging ability with toolcarrier capabilities for increased performance and versatility
- A new line of optimized Performance Series Buckets and other attachments are available in a Pin-On or Fusion™ Coupler interfaces.

Medium/Large | 972M, 972M XE, 980M, 982M, 986K, 988K, 988K XE

- Net Power: 299 hp – 541 hp
- Operating Weights: 54,871 lb – 116,362 lb
- The new 988K XE is the first Cat Wheel Loader featuring a high-efficiency electric drive system, which improves overall efficiency by 25 percent
- 982M is a two-pass match for superior productivity, loading typical on-highway trucks





- Gross Power: 67.1 hp – 110 hp
- Rated Operating Capacities: 1,550 lb – 3,700 lb
- Electronic Torque Management system helps maximize performance, minimize fuel consumption
- Available high-back, heated, air-ride seats include seat-mounted, adjustable joystick controls
- Sealed and pressurized cabs provide a cleaner, quieter work environment
- Speed Sensitive Ride Control option assures an even smoother ride with better material retention
- Available High-Flow, high-pressure hydraulic systems efficiently run even the most power-hungry attachments

NEW TO THE
D3 SERIES

- Increased door opening angle (up to 40% wider) for easier entry and exit
- Wider-spaced joystick pods deliver an additional 3 inches of space for increased operator comfort.
- SMART Technology enables the machine to recognize when a SMART Attachment is connected, tailoring the existing machine controls to the needs of the connected attachment

226D3

232D3

236D3

242D3

246D3

262D3

272D3

272D3 XE





COMPACT TRACK LOADERS

239D3

249D3

259D3

279D3

289D3

299D3

299D3 XE

Compact Track Loaders | 239D3, 249D3, 259D3, 279D3, 289D3, 299D3, 299D3 XE

- Gross Power: 67.1 hp – 110 hp
- Rated Operating Capacities: 1,530 lb – 4,340 lb @ 35% tipping load
- Standard, fully independent torsion suspension undercarriage and Speed Sensitive Ride Control option ensures a smoother ride and better material retention
- The Dual direction self-leveling, return-to-dig, and worktool positioner features automate machine functions to help with repetitive tasks like grading, digging, and loading
- Industry-leading sealed and pressurized cab option provides a cleaner, quieter work environment
- Available high-back, heated, air-ride seats include seat-mounted, adjustable joystick controls
- Available Bar Tread style rubber tracks available for a smoother ride, lower ground disturbance, and improved traction in mud or snow.

NEW TO THE D3 SERIES

- Increased door opening angle (up to 40% wider) for easier entry and exit
- Wider-spaced joystick pods offer an additional 3 inches of space for increased operator comfort
- SMART Technology enables the machine to recognize when a SMART Attachment is connected, tailoring the existing machine controls to the needs of the connected attachment



299D3 XE Land Management

Choose Land Management and Debris Management packages for demanding vegetation-management applications such as mulching, brush-cutting, vegetation control and mowing.



HYDRAULIC EXCAVATORS

Mini | 300.9D, 301.5, 301.7 CR, 301.8, 302 CR, 302.7D CR, 303E CR, 303.5E2 CR, 304E2 CR, 305E2 CR, 306 CR, 307.5, 308 CR, 308 CR VAB, 309 CR, 309 CR VAB, 310

- Net Power: 13 hp – 70.3 hp
- Operating Weights: 2,061 lb – 22,447 lb
- All new models feature sealed and pressurized cab complete with camera-ready monitor, Bluetooth radio and phone, and Stick Steer with cruise control for easier, efficient operation
- The new 309 CR High Flow includes undercarriage options and dedicated auxiliary pump for hydromechanical attachments
- The new 310 features a long undercarriage, fixed boom, standard tail and 10,000-pound lifting capability

Medium/Large | 313, 313 GC, 315, 315 GC, 317, 317 GC, 320, 320 GC, 323, 325, 326, 330, 330 GC, 335, 336, 336 GC, 349

- Net Power: 70 hp – 424 hp
- Operating Weights: 30,600 lb – 105,200 lb
- All models feature a large, ergonomic, and comfortable cab
- All models offer fuel saving features, longer maintenance intervals, and simplified maintenance points for lower operating costs
- All models offer a full range of Cat work tools to optimize performance.
- 313, 315, and 317 offer superior performance and standard 2D Grade, Payload, and E-Fence technologies that boost operator efficiency and improve jobsite productivity. Optional technology upgrades are available
- 313 GC, 315 GC, and 317 GC offer job-matched performance and the reliability you expect at the low-cost-per-hour you need
- The compact radius models, plus 315 and 315 GC, are the ideal choice for working confidently in space-restricted areas like road jobs with lane closures and next to buildings

300.9D	313
301.5	313 GC
301.7 CR	315
301.8	315 GC
302 CR	317
302.7D CR	317 GC
303E CR	320
303.5E2 CR	320 GC
304E2 CR	323
305E2 CR	325
306 CR	326
307.5	330
308 CR	330 GC
308 CR VAB	335
309 CR	336
309 CR VAB	336 GC
310	349



WHEELED EXCAVATORS

M314 M320F

M315F M322F

M316

M317F

M318

- Net Power: 148 hp – 169 hp
- Travel Speeds: Up to 23 mph
- Newest Next Gen M314, M316 and M318 models offer increased efficiency, improved operator comfort, with lower operating and maintenance costs
- The versatility and mobility of wheeled excavators enable you to complete more jobs, in less time, with fewer machines
- Wheeled excavators can move quickly from job to job eliminating the cost of transporting equipment
- With standard Tool Control System, you can pre-program hydraulic flow and pressure for up to 10 different attachments
- Best-in-class visibility to front, both sides and upward is further enhanced by a standard rear video camera that displays on in-cab monitor
- Multiple auxiliary hydraulic options enable use of a wide range of attachments





TRANSFER STATION & MRF MACHINES

Material Handlers | MH3022, MH3024, MH3026, MH3040

- Net Power: 152 hp – 169 hp
- Operating Weights: 48,094 lb – 57,651 lb
- New MH3040 cuts fuel costs by up to 25% and maintenance costs by up to 20%
- The MH3022 is an agile solution for jobs with space constraints, providing the necessary reach for tasks such as indoor sorting and waste handling
- The MH3024 features optimum reach with its long MH front linkage and a choice of undercarriage configurations to complete jobs like waste handling, recycling and bulk material handling
- The MH3026 is the best choice if work requires greater lifting capacities and a larger working envelope
- All models feature continuous top- and side-plate construction throughout boom and stick for greater durability

MH3022	950M
MH3024	962M
MH3026	966M
MH3040	966M XE
926M	972M
930M	972M XE
938M	980M

Small & Medium Wheel Loaders | 926M, 930M, 938M, 950M, 962M, 966M, 966M XE, 972M, 972M XE, 980M

- Net Power: 153 hp – 386 hp
- Operating Weights: 28,770 lb – 66,318 lb
- All M Series machines feature deep system integration, which reduces emissions and improves performance and fuel economy
- Flexport molded and Brawler “press-on” solid tires prevent unscheduled downtime, while increasing productivity
- Three specially designed waste buckets handle different waste applications
- Waste Handling package includes: heavy guarding, special radiator, reversing fan and engine and cab pre-cleaners—improves uptime, reliability and operator comfort





D5	623K
D6	627K
D6 XE	637K
D7	725
D8T	730
D9	730 EJ
816K	735
826K	740 GC
836K	740 EJ
621K	745

Dozers | D5, D6, D6 XE, D7, D8T, D9

- Net Power: 130 hp – 436 hp
- Operating Weights: 29,258 lb – 106,618 lb
- Waste Handler packages help protect machines from damage caused by debris
- Landfill blades and center-hole track shoes optimize Waste Handler performance
- Insulated Clean Emissions Module and thermal shields provide a high level of thermal protection

Landfill Compactors | 816K, 826K, 836K

- Gross Power: 284 hp – 562 hp
- Operating Weights: 56,899 lb – 123,319 lb
- Comprehensive guarding includes the Cat® Axle Guard system, which protects final drives and wheel rims
- Cat wheels and tips maximize performance and compaction. Choose from paddle tips, plus tips, combination tips and diamond tips
- A variety of blades—Straight, Semi U and U—helps meet diverse cover-material-spreading requirements

Scrapers | 621K, 623K, 627K, 637K

- 407 hp – 570 hp for tractors (+290 hp for rear engine on tandem models)
- Scraper Capacities: 24 – 34 yd³ (heaped)
- The K Series steering system requires significantly less effort, which reduces operator fatigue and improves efficiency
- Ground Speed Control enables the operator to set the desired top speed, and the machine will find the gear that works best for the engine and transmission, resulting in a lower engine load factor and reduced fuel burn

Articulated Trucks | 725, 730, 730 EJ, 735, 740 GC, 740 EJ, 745

- Net Power: 342 hp – 504 hp
- Rated Payloads: 26.5 tons – 45.2 tons
- Articulated trucks are well-suited for placing cover soil. The 730 EJ and 740 EJ feature ejector bodies, which are safer and provide clean load ejection on-the-go.
- All models feature a completely re-engineered cab for improved comfort and ease of operation. This includes Assisted Hoist Control and Cat Detect with Stability Assist system. The quieter cab design lowers inside sound levels by 7dB.





TRACK LOADERS

Dozers | 953K, 963, 963K, 973K

- Net Power: 154 hp – 275 hp
- Operating Weights: 33,852 lb – 63,900 lb
- Increased horsepower enables excellent maneuverability, powerful excavating and efficient truck loading
- Redesigned, ergonomic cabs provide greater operator comfort
- Revolutionary SystemOne™ undercarriage and a new implement system increase productivity and reduce operating costs
- Ideal for working in the toughest underfoot conditions on demanding construction and demolition jobsites

953K

963

963K

973K

STRETCH YOUR BUDGET DOLLARS

Agency fleet efficiency is improved by pairing the right attachments with the right machines in your fleet. Attachments enable one machine to perform the work of many specialty machines, thereby stretching your equipment capabilities without stretching your available budget funds.

Cat Attachments Include:

- | | | |
|-----------------|--------------------------|--------------------------|
| • Augers | • Grapples | • Shears |
| • Backhoes | • Hammers | • Side Discharge Buckets |
| • Bale Handlers | • Lifting Hooks | • Snow Blowers |
| • Blades | • Material Handling Arms | • Snow Plows and Pushes |
| • Brooms | • Mixing Buckets | • Stump Grinders |
| • Brushcutters | • Mulchers | • Thumbs |
| • Buckets | • Multi Processors | • Tillers |
| • Cold Planers | • Plows | • Trenchers |
| • Compactors | • Pulverizers | • Truss Booms |
| • Couplers | • Rakes | • Wheel Saws |
| • Cutters | • Rippers | |
| • Forks | • Scarifiers | |



Consult the equipment experts at our dealership to learn more about the best attachments for your fleet.

YOUR PARTNER TO GET THE JOB DONE RIGHT

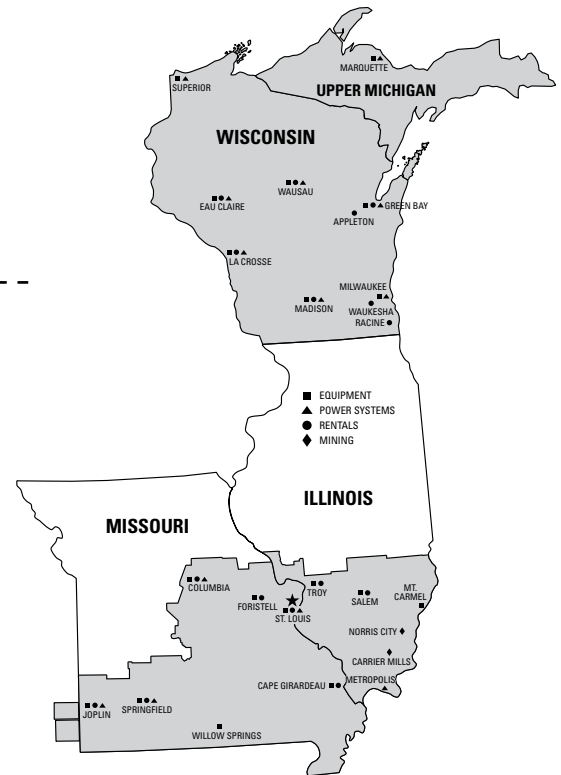
Count on Cat® for the right equipment for any job. Whether you're paving roads, fixing potholes, removing snow, maintaining recreation areas, or keeping the water supply clean, Fabick Cat is here to support governmental agencies. With convenient service locations throughout major portions of Missouri, Illinois, the entire state of Wisconsin and the Upper Peninsula of Michigan, we supply the machines, generator sets and work tools you need for virtually any job.

NEED A SOLUTION YOU HAVE TOTAL CONFIDENCE IN? Give your local Fabick Cat representative a call today for expert advice and worry free Life Cycle Costing.

LET'S DO THE WORK.™
fabickcat.com

MO & IL Operations
636.343.5900

WI & MI Operations
414.461.9100



FABICK CAT



MAXIMIZE YOUR INVESTMENT

A **Customer Value Agreement (CVA)** is a hassle-free ownership plan designed to get the most from your Cat® equipment.

- Genuine Cat Parts are delivered on time to your door along with instructions.
- Benefit from the security of an Equipment Protection Plan to avoid unexpected costs for unplanned repairs.
- All keys to machine health are displayed on your phone.

The CVA can be combined with your monthly machine payment. Leverage Cat value with one easy plan to maximize your investment and lower ownership costs.

To learn more about establishing a CVA, please contact our dealership.

